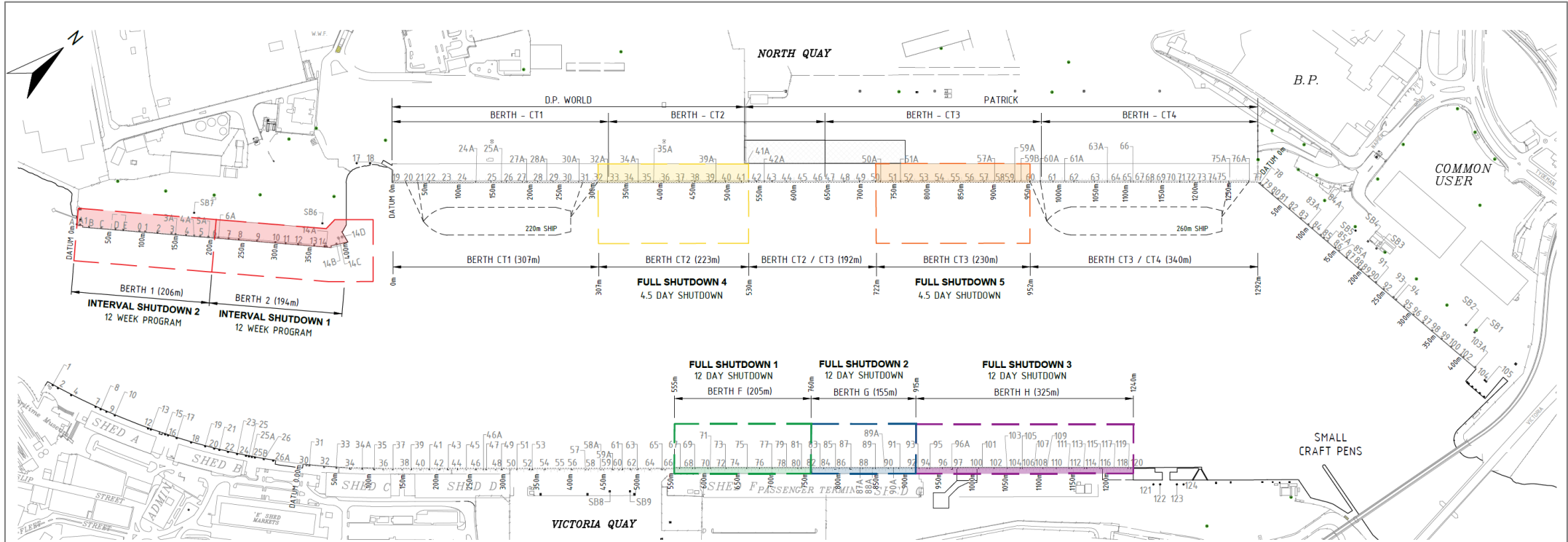


# Fremantle Ports Inner Harbour Berth Maintenance Schedule FY26-27

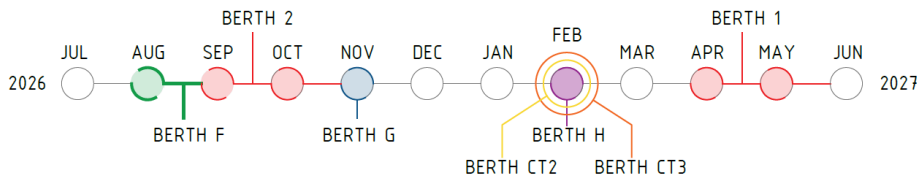


## INNER HARBOUR SHUTDOWN MOBILISATIONS GENERAL ARRANGEMENT - FY 26/27

1: 3000

### SITE LEGEND:

- 3A BOLLARD & NUMBER
- 50m BERTH METER MARK
- 10 PIER NUMBER
- SHARED ZONE



## FULL SHUTDOWN LEGEND & DATES:

COMPLETE SUSPENSION OF BERTH OPERATIONS WITHIN THE NOMINATED AREA FOR THE FULL DURATION OF THE WORKS.

- SHUTDOWN MOBILISATION 1: BERTH F  
12 DAY SHUTDOWN PERIOD  
6am MONDAY 24 AUGUST 2026 - 12pm FRIDAY 4 SEPTEMBER 2026
- SHUTDOWN MOBILISATION 2: BERTH G  
12 DAY SHUTDOWN PERIOD  
6am MONDAY 9 NOVEMBER 2026 - 12pm FRIDAY 20 NOVEMBER 2026
- SHUTDOWN MOBILISATION 3: BERTH H  
12 DAY SHUTDOWN PERIOD  
6am MONDAY 8 FEBRUARY 2027 - 12pm FRIDAY 19 FEBRUARY 2027
- SHUTDOWN MOBILISATION 4: CT2  
4.5 DAY SHUTDOWN PERIOD  
6am MONDAY 15 FEBRUARY 2027 - 5pm FRIDAY 19 FEBRUARY 2027
- SHUTDOWN MOBILISATION 5: CT3  
4.5 DAY SHUTDOWN PERIOD  
6am MONDAY 22 FEBRUARY 2027 - 5pm FRIDAY 26 FEBRUARY 2027

## INTERVAL SHUTDOWN LEGEND & DATES:

SUSPENSION OF BERTH OPERATIONS IN SET INTERVALS AROUND SCHEDULED SHIPPING WINDOWS WHICH MAINTENANCE PAUSES FOR VESSEL HANDLING.

- INTERVAL SHUTDOWN MOBILISATION 1: BERTH 2  
APPROX. 12-WEEK WORKS DURATION.  
TARGET COMMENCEMENT AUGUST 2026 (TBC).
- INTERVAL SHUTDOWN MOBILISATION 2: BERTH 1  
APPROX. 12-WEEK WORKS DURATION.  
TARGET COMMENCEMENT APRIL 27 (TBC).